

**WHELEN<sup>®</sup>**  
MANUFACTURED IN AMERICA

**CARBIDE<sup>™</sup>**  
CENCOM

OFFICIAL WARNING LIGHTS OF  
**NASCAR**

# CenCom Carbide™

Engineered to maintain situational awareness of the officer, Whelen's CenCom Carbide houses numerous innovative technologies that deliver highly effective visual and auditory warning.

Designed for simplistic, hands-free usage, Carbide allows officers to easily adapt with Situation Based Integration. This feature allows for scene specific functions using various vehicle components, such as the horn or brakes. Priorities can now be fully configured and controlled.

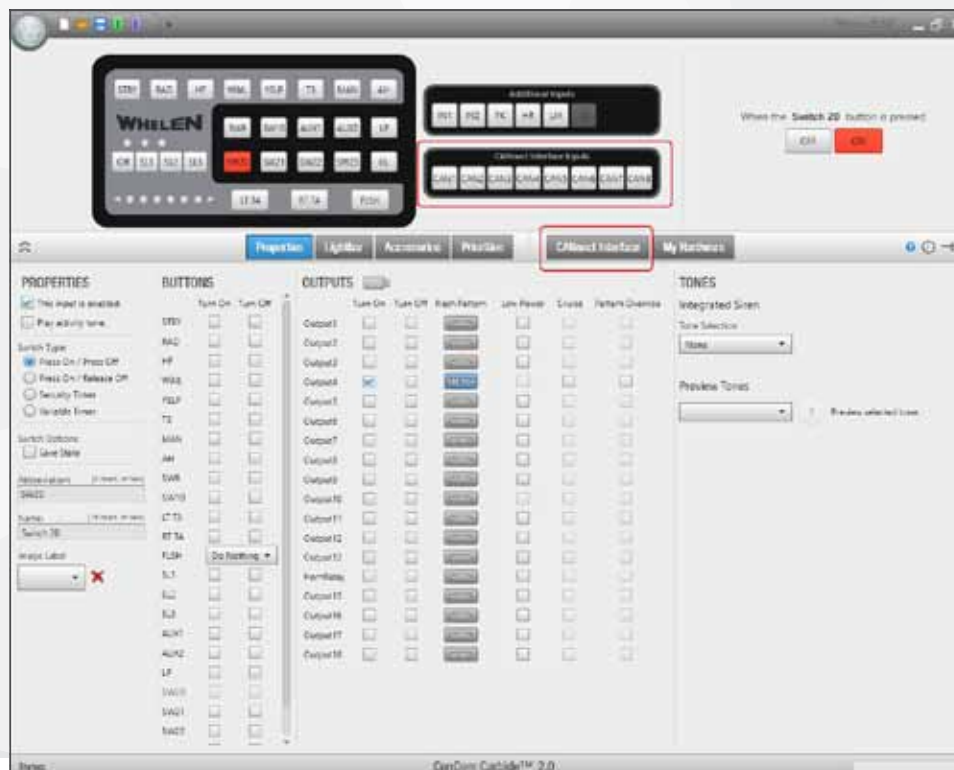
Carbide provides the capability to sync all lights together, including a Traffic Advisor™ and the new rear WeCan® Inner Edge® RTX.

Easily reproducible from vehicle to vehicle, Carbide installs effortlessly with little wiring intricacy.

Optional expansion modules and WeCan dual siren amplifier are available to further customize functions.

## Program

Carbide makes programming straightforward with a newly designed Windows based software. This intuitive platform makes configuring simple, while a USB 2.0 port transfers data faster than ever before.



**NEW** CANnect™ Interface, see page 4



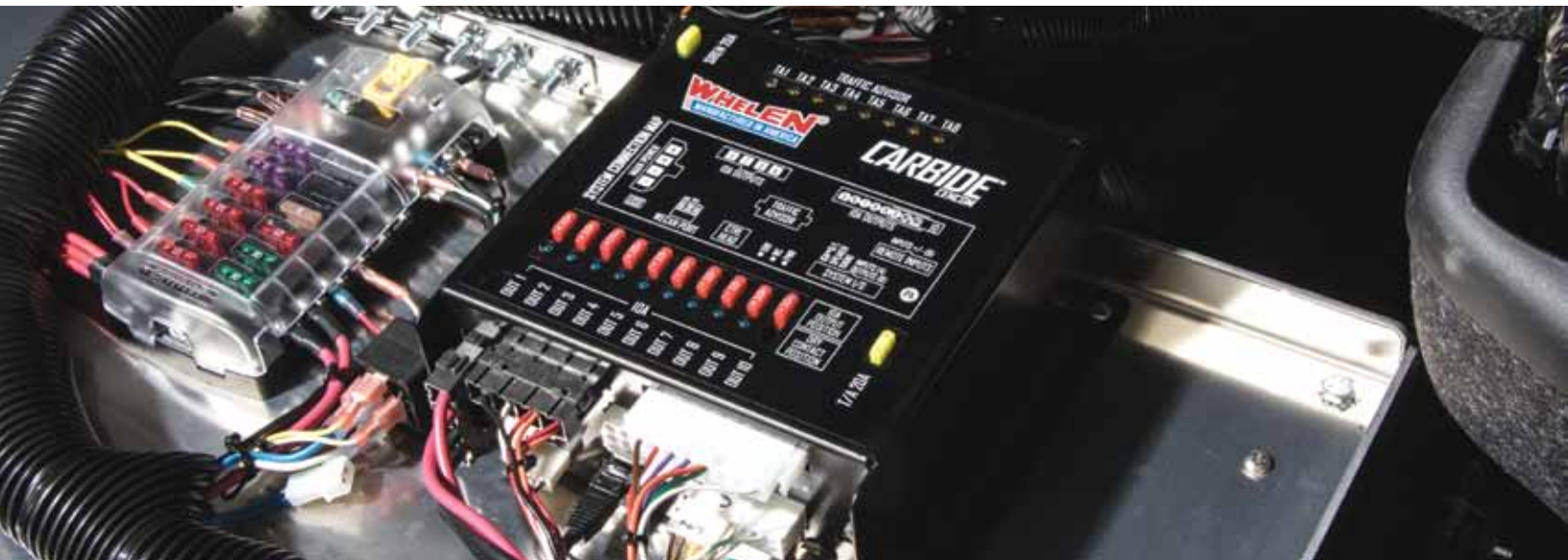
## ***Design Features***

- Control warning lights, siren, and Traffic Advisor™ functions from a single keypad
- Newly designed control head with 21 buttons and slide switch
- Newly designed software allows for easy program configuration via USB 2.0
- Fully Supports all WeCan® Series products
- 12 positive or negative activated inputs
- Supports up to 2 of the following: front WeCan Inner Edge®, new rear WeCan Inner Edge, or optional remote 16 output modules
- Separate backlight control
- 18 fully protected and fused outputs
- Supports one or two 100 watt speakers
- LED indicator lights allow for simple troubleshooting of outputs and WeCan network
- Easily accessible fuses and connections
- Heavy-duty power and output connectors
- Supports WeCan dual siren amplifier option
- Meets or exceeds all applicable SAE, California Title XIII requirements with various Whelen speakers
- Five year warranty



# Integrated Load Manager

Carbide™ reduces the chance of a drained battery by shutting off outputs as vehicle battery voltage declines.



## Integrated Auto-Off Timer

Keep Carbide functioning even if the ignition is turned off.

- *When used with the Integrated Load Manager, this provides a safe way of maintaining critical warning functions even if the keys must be removed from the ignition*



## Control Head

Ergonomically designed for situational awareness of the officer, Carbide features a new control head with 21 buttons and a slide switch. Completely configurable by the user, the control head is designed with tick marks, a raised surface, and a recessed center for ease of use, allowing officers to focus on the road.

# **NEW** CANnect™ CAN Interface

The CANnect CAN Interface is a simple plug-in connection to the vehicle. Using the CANnect, CAN bus signals are easily applied to automate warning system functions.

- Simple and easy installation
- Eliminates labor costs
- Saves money on wires and connectors
- Helps maintain the integrity of the vehicle

## **Select from a series of vehicle signals\*:**

- Headlight
- Low Beams
- High Beams
- Park Lamps
- Left Turn Signal
- Right Turn Signal
- Hazard Lights
- Brake
- Park Brake
- Park
- Reverse
- Neutral
- Drive
- Transmission Range
- Vehicle Speed
- Throttle Position
- Engine RPM
- Engine Running
- Fuel Level
- A/C Clutch
- Key Switch ACC
- Key Switch IGN
- Key Switch Off
- Key Switch Position
- Key Switch RUN
- Any Front Door
- Any Back Door
- Front Driver Door
- Front Passenger Door
- Rear Driver Door
- Rear Passenger Door

\*Vehicle signals may vary for each make/model/year, see CenCom Carbide™ software for a complete list.







# ***Situation Based Integration***

Carbide™ features improved Situation Based Integration, a technology first introduced in 1993 with Whelen's B-Link™ System.

- Priorities can now be fully configured and controlled
- Carbide controls scene-specific lighting for safety and efficiency using any of the integrated 12 programmable inputs, 18 programmable outputs, and optional expansion modules
  - Turn lights/buttons on or off when the door opens, vehicle transmission is shifted, brakes are pressed, or the sun goes down
  - Automatically turn on flood lighting when take-downs are activated
  - Change warning patterns with siren tones
  - Activate a burst of light when the airhorn is pressed
  - Light up the rear of the vehicle when brakes are pressed
  - Activate the alarm feature to create a disorienting visual and audible display to aid in officer safety



*Turn off end warning/alley lights when door opens*

# CenCom Carbide™

## Outputs

18 Outputs:

- 4 x 20A (steady or flashing)
- 5 x 10A (steady or flashing)
- 1 x 10A dry contact relay (steady only)
- 8 x 1A (steady or flashing)

## Inputs

12 Inputs (positive or negative switched)

## Siren

200W Siren

Full set of siren tones

Supports new WeCan® dual siren amplifier option

## Operation

Conditional operations

Configurable priorities

## Expansion Modules

Supports up to two of the following:

- Front WeCan Inner Edge®
- New rear WeCan Inner Edge RTX
- Optional Remote 16 Output Modules

## Integrated Features

- 9/C Traffic Advisor™ Driver, standard
- New heavy-duty crimp style connections on WeCan port
- Configurable Load Manager
- Configurable Ignition Delay Timer

## Additional Features

- Expanded support for Photocell
- Full support of SOLO™ WeCan lightbars
- Full support of DUO™ and TRIO™ lightbars
- Supports new 21 button control head
- NEW** CANnect™ CAN Interface

## Model

## Description

### CCSRNT4F

3 section control head and 8 push-buttons, 4-position slide switch with a 7-position rotary knob. Manual, Airhorn, plus 3 Traffic Advisor switches

### CCSRNT5F

CCSRNT4F, including a CANnect CAN BUS Interface module for 2016-2017 Ford Interceptor Utility, 2016 Ford Interceptor Sedan, 2016 Ford F-150, 2016 Dodge Charger, and 2016 Chevy Tahoe

### CCSRNT4G

3 section control head and 21 push-buttons, 4-position slide switch

### CCSRNT5G

CCSRNT4G, including a CANnect CAN BUS Interface module for 2016-2017 Ford Interceptor Utility, 2016 Ford Interceptor Sedan, 2016 Ford F-150, 2016 Dodge Charger, and 2016 Chevy Tahoe

### CCSRN4DA

WeCan External Amplifier for dual amplifier applications

### CANEM16

16 Output Expansion Module



51 Winthrop Road, Chester, CT 06412-0684  
860-526-9504  
[www.whelen.com](http://www.whelen.com)

ISO 9001 Registered QMS

WhelenENG



Whelen Engineering reserves the right to upgrade and improve products without notice.  
NASCAR® is the registered trademark of the National Association for Stock Car Auto Racing, Inc.  
© 2016 Whelen Engineering Company, Inc.  
Printed in the U.S.A. Form No. 12963G - 12/8/2016